

DISTRICT DE MORGES
COMMUNE DE COSSONAY

DT n° 5477-059 / AVB-SH
 Cossonay, le 4 février 2015

Parcelle n° 678, propriété de la Commune de Cossonay

Plan de situation - Projet de DDP



COURDESSE & ASSOCIÉS
 Ingénieurs et Géomètres SA

Succ. de Jan & Courdesse SA et Jomini-van Buel SA

Prieure 4 - CP 85 - 1304 Cossonay
 Tel 021 861 22 93 - Fax 021 861 38 10
 cossonay@courdesse-associés.ch
 www.courdesse-associés.ch

Réseau LOCAL

Echelle 1:1000



Parcelle 678
41'909 m²

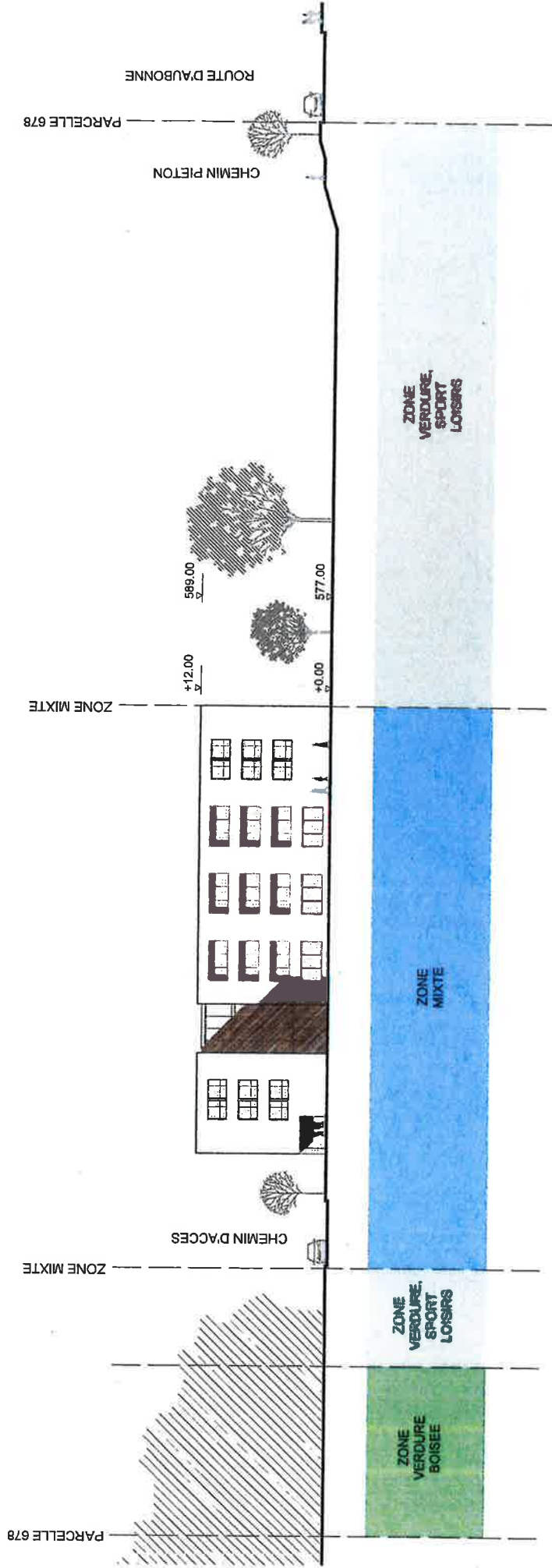
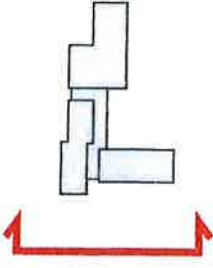
Zone mixte
9'511 m²

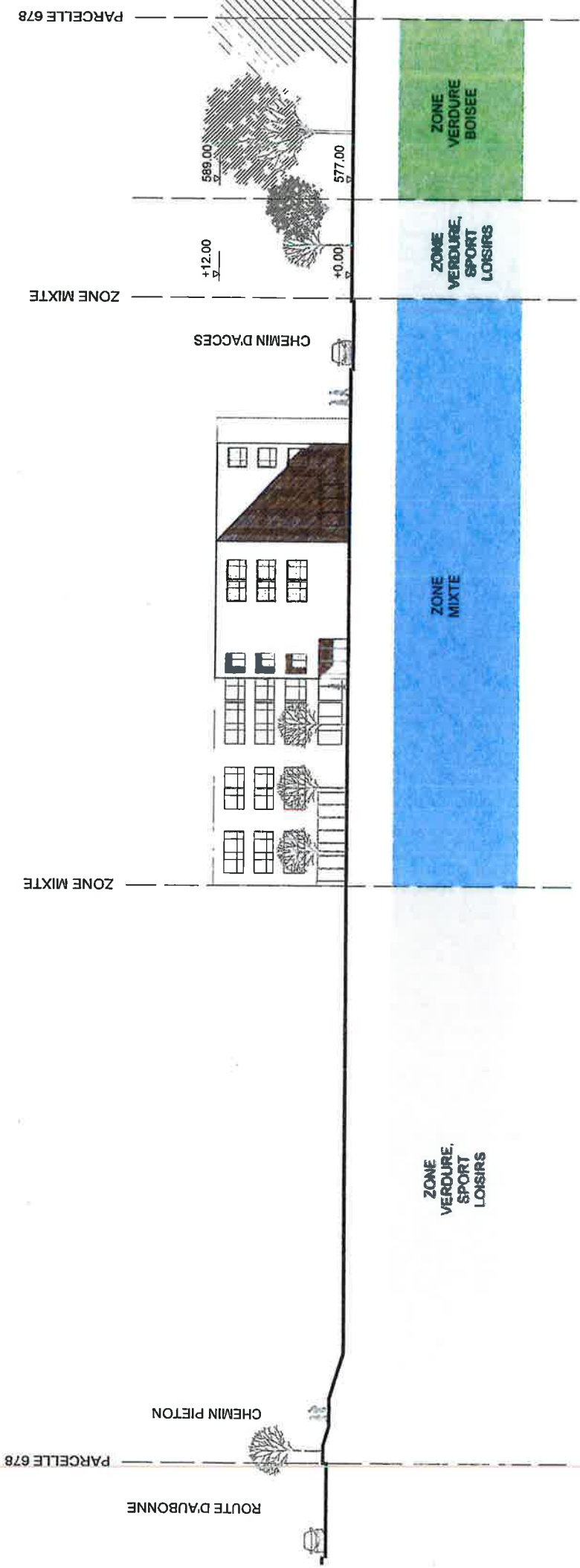
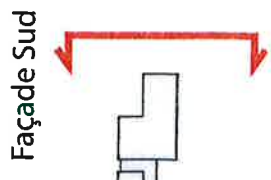
DDP
4'941 m²

dont parking (25 pl.)
574 m²

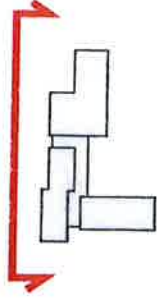


Façade Nord

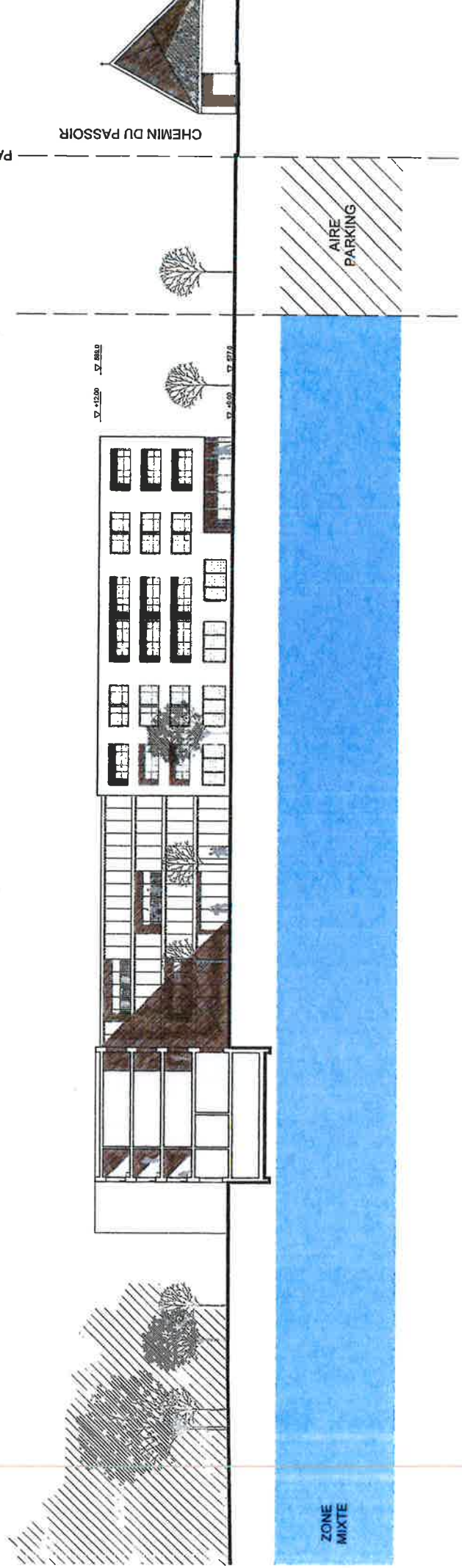
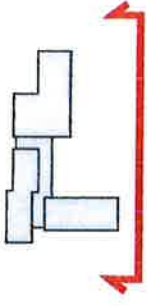




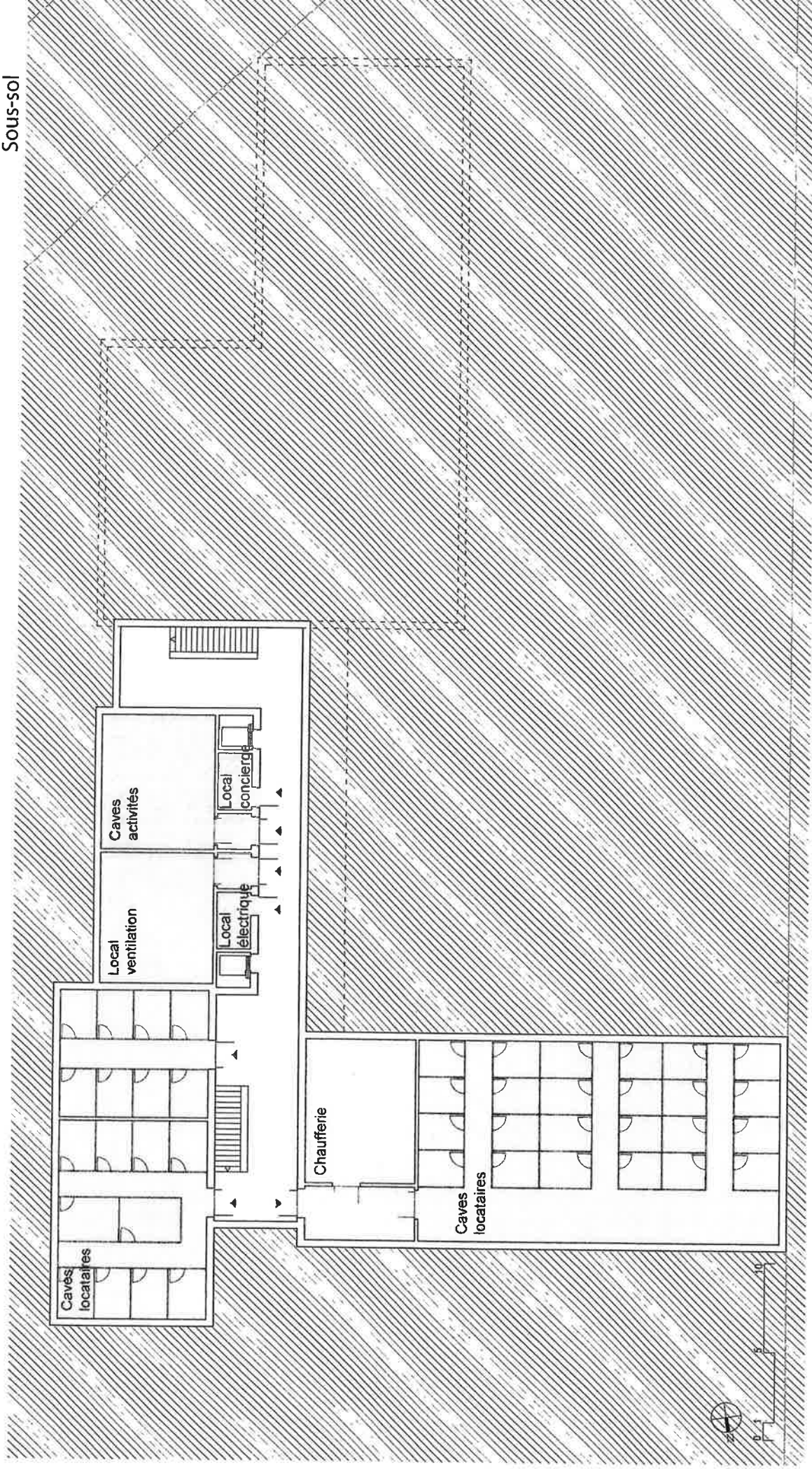
Façade Est



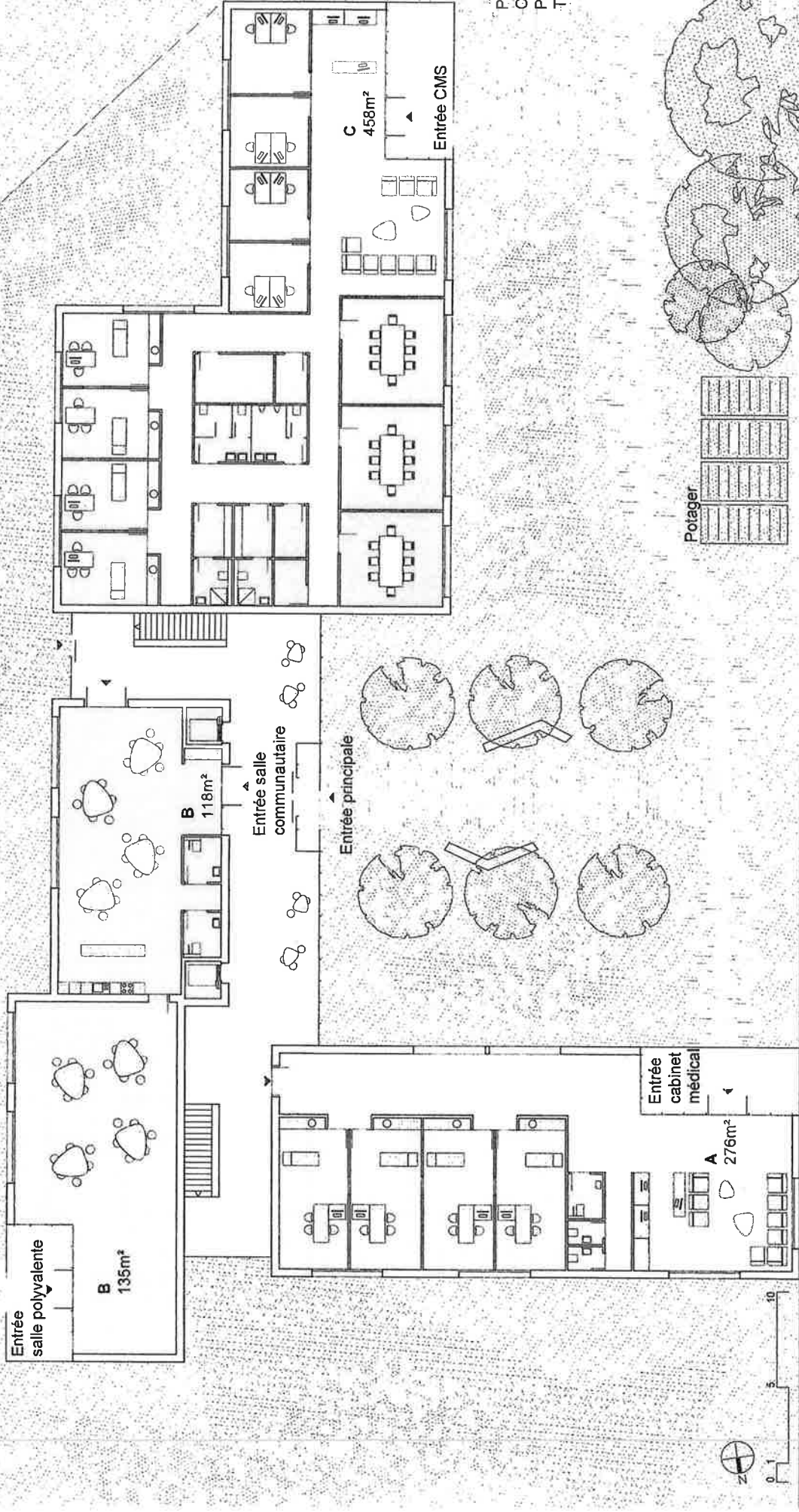
Façade Ouest



Sous-sol

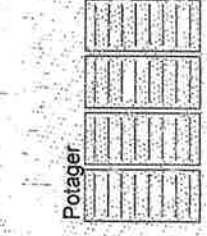


Rdc



PARKING
CMS + LO
PROT.
Total 25 p

Potager



0 5 10

Etage type

